



WORLD ORIENTEERING CHAMPIONSHIPS

TRENTINO_VENETO

5th - 12th

JULY 2014

ITALY



I am pleased and honoured to present the 2014 World Orienteering Championships, which for the first time will be held in Italy next year and to be precise in the Trentino and Veneto regions, considered our national orienteering's cradles.

I am sure that the Venice's canals, that will be the site of the sprint competition, the town centre of Trento, where the Relay Team will make its debut, the beautiful forests of Lavarone and Asiago, where other big world events have already taken place, will leave all these great athletes an indelible memory of Italy after long trainings and sacrifices to fulfil their world dream.

During the week the orienteers and their supporters will enjoy not only woods and landscapes, but also the famous Italian hospitality, the food, the artistic heritage and the towns, rich of history and culture like not many others in the world.

An excellent job has been done by the local technical staff who is preparing to organize an appointment full of commitments.

In the name of the Italian Orienteering Federation, thanks to all the departments of the Veneto and Trentino regions, to all the local administrations, the Tourist boards, event's partners and sponsor, associations and thanks to the volunteers for their support, so precious to realize this great sporting event.

See you soon in Italy!

Mauro Gazzero

President of Italian Orienteering Federation



It is with great pleasure and immense honour that I have the opportunity to welcome orienteers from all over the world, especially those attending the World Championships in Italy.

I am sure that the areas selected will offer a picture of outstanding natural beauty, spectacular arenas and some of the most beautiful mountains in Italy. The technical terrain and the added value offered by Venice will satisfy the most demanding expectations.

This will be a great sporting event and an opportunity to show the Orienteering world, once again, that Italy can organize events with great professionalism, using all our best resources.

Thanks to all those who have wanted these World Championships and are supporting this event and to all those people that will choose to be with us and enjoy this magnificent spectacle.

Best regards to all!

Gianpietro Mazzeni

Organizing Committee Chairman

GENERAL PROGRAM WOC

DAY	WOC	
FRI. 4 th JULY	TRAINING	
SAT. 5 th JULY	SPRINT QUALIFICATION + FINAL	
SUN. 6 th JULY	OPENING CEREMONY ASIAGO	
MON. 7 th JULY	SPRINT RELAY	
TUES. 8 th JULY		
WED. 9 th JULY	LONG DISTANCE FINAL	
THUR. 10 th JULY		
FRI. 11 th JULY	MIDDLE DISTANCE FINAL	
SAT. 12 th JULY	RELAY	CLOSING CEREMONY LAVARONE
SUN. 13 th JULY	DEPARTURE	



DETAILED WOC PROGRAM

The World Orienteering Championships and World Trail Orienteering Championships 2014 will be held in Venezia - Lavarone (TN) - Asiago (VI) - Levico Terme (TN) - Trento, Italy.

2014

WEDNESDAY 2 ND JULY	PM	Model Event	ASIAGO/LAVARONE
	PM	Event Centre Opens	LAVARONE
THURSDAY 3 RD JULY	AM	Model Event	ASIAGO/LAVARONE
	AM	Event Centre Opens	LAVARONE
FRIDAY 4 TH JULY	AM	Model Event	ASIAGO/LAVARONE
	PM	Event Centre Opens	JESOLO
	AM	Event Centre Opens	ASIAGO/LAVARONE
	PM	Model Event	VENEZIA
SATURDAY 5 TH JULY	AM	Sprint Qualification	BURANO
	PM	Sprint Final	VENEZIA
SUNDAY 6 TH JULY	AM	Italy 5 days 1^	TURCIO
	AM	Model Event	ASIAGO/LAVARONE
MONDAY 7 TH JULY	AM	Italy 5 days 2^	LEVICO TERME
	PM	Mixed Relay	TRENTO
TUESDAY 8 TH JULY	AM	Model Event	ASIAGO/LAVARONE
WEDNESDAY 9 TH JULY	AM	Italy 5 days 3^	LAVARONE
	PM	Long Distance Final	LAVARONE
THURSDAY 10 TH JULY	AM	Model Event	ASIAGO/LAVARONE
	AM	Italy 5 days 4^	MILLEGROBBE
	PM	IOF/VIP/Media race	LAVARONE
FRIDAY 11 TH JULY	PM	Middle Distance Final	CAMPOMULO
SATURDAY 12 TH JULY	AM	Italy 5 days 5^	CAMPOMULO
	PM	Relay	CAMPOMULO

VENUE AND ACCESS

The World Championships 2014 will take place during July 5-13, 2014. A new World Orienteering Championships format, sprint relay, will be introduced. The World Orienteering Championships (WOC), the World Trail Orienteering Championships (WTOC) and the 5 Days of Italy 2014 (WOC Tour) will be a high quality action packed week in the wonderful areas of Trentino and Veneto in northern Italy.



WEATHER AND CLIMATE

The region actually features a fairly wide range of climatic conditions. While some areas have a rather mild and Mediterranean climate, it is a fairly Alpine climate with short summers and cold winters characterizing the places at higher altitudes, mountains and glaciers. The region is still mainly characterized by a moderate climate with gentle summers, snowy winters and an average level of humidity.

OFFICIAL WOC AIRPORTS

VENICE AIRPORT MARCO POLO

Viale G. Galilei, 30/1
30173 Tessera-Venezia (Ve)
143 Km from the event center in Lavarone

VERONA AIRPORT VALERIO CATULLO

37066 Caselle di Sommacampagna (VR)
111 km from the event center in Lavarone

ORGANISING COMMITTEE

EXECUTIVE COMMITTEE

President WOC-WTOC Association
Vice President
Members

GianPietro Mazzeni
Roberto Sartori
Roberta Falda Angelo Frighetto Augusto
Cavazzani Sergio Grifoni Leonardo Longhi

EVENT CONTROLLERS

WOC IOF Senior Event Adviser
WOC IOF Assistant SEA
National Controller

Bjorn Persson (SWE)
Jørn Sundby (NOR)
Francesco Giandomenico

WTOC IOF Senior Event Adviser
WTOC National Controller

Lennart Wahlgren (SWE)
Giuliano Michelotti

ORGANIZING TEAM

WOC Event Director
WTOC Event Director
Event Manager
IOF Congress Coordinator
Race Director WOC
Technical Director Italy 5 Days
Coordinator
Maps
Promotion
Media
Human Resources and volunteers

Janos Manarin
Roberta Falda
Stefano Ravelli
Maria Silvia Viti
Mauro Fizzoni
Angelo Frighetto
Giuseppe Falco
Augusto Cavazzani
Leonardo Longhi
Mario Facchini
Gino Vivian

IT WOC
IT WTOC
Accommodation
Trasportation
Medical - Security
Events
Trainings

Stefano Galano
Renato Pelessoni
APT Lavarone/Folgaria/Luserna - Asiago Turismo
Alice Tessari
Sandro Gallo
Leonardo Longhi
Cosimo Guasina

CONTACT

WOC WTOC ITALY 2014

APT Valsugana
S. Domini Street 3
38056 Levico Terme (Trento) Italy
info@woc2014.info
www.woc2014.info

CLASSES AND ENTRY REGULATIONS

WOC

The Competition Rules for IOF Foot Orienteering Events (valid from Jan 2013) will be applied to participation in the World Orienteering Championships 2014: "There is one class for women and one class for men. There are no age restrictions".

FIVE DAYS OF ITALY

During the WOC-WTOC week 5-day public competition will be held for all classes, men and women.

EVENT CENTRE AND ACCOMMODATION

WOC WTOC EVENT CENTRE AND MEDIA CENTER

Lavarone TN - c/o Turist Office Convention Bureau
Frazione Gionghi, 73 - I 38046 Lavarone TN
From 3rd to 5th of July Event centre for WOC will be in Jesolo
C/o Palarrex - Tourist Hall
Piazza Brescia, 11 - 30016 Jesolo Lido (VE)

FIVE DAYS EVENT CENTRE

Asiago VI - c/o Palazzo del Turismo
Via Millepini, 1 - I 36012 Asiago VI

IOF GENERAL ASSEMBLY

Grand Hotel Astoria - Piazza Italia, 1
I-38046 Lavarone (TN)

CONTACT

info@woc2014.info
info@wtoc2014.info



COMPETITION AND TRAINING OPPORTUNITIES BEFORE WOC 2014

TRAINING CAMPS

20 September 2013	CORVARA (BZ) - SPRINT RELAY
21 September 2013	LA VILLA (BZ) - SPRINT with MASS START
22 September 2013	ARMENTAROLA (BZ) - LONG DISTANCE - WRE
23 - 26 September 2013	OFFICIAL TRAINING CAMP WOC2014
23 September 2013	VENICE - SPRINT TRAINING
27 September 2013	FOLGARIA (TN) - SPRINT RELAY
28 - 29 September 2013	LAVARONE (TN) - 2DAYS ALTOPIANI - WRE
26 - 30 May 2014	OFFICIAL TRAINING CAMP WOC2014
31 May 2014	PERGINE VALSUGANA - SPRINT RELAY
1 June 2014	ASIAGO - MIDDLE DISTANCE - WRE
2 June 2014	ASIAGO - LONG DISTANCE - WRE
28 June - 4 July	OFFICIAL TRAINING CAMP WOC2014

CONTACT FOR TRAINING

Cosimo Guasina - training@woc2014.info

MAPS

FOREST MAPS / SCALE

Barricata	1:10 000 / 1:15 000
Folgaria/ Serrada	1:10 000 / 1:15 000
Forte Cherle	1:10 000 / 1:15 000
Kubelek/ Malga Boscon/ Platabek	1:10 000 / 1:15 000
Kaberlaba	1:10 000 / 1:15 000
Passo Coe	1:10 000 / 1:15 000
Turcio	1:10 000 / 1:15 000
Hinterbeck	10.000

URBAN MAPS / SCALE

Asiago	4.000
Treviso	4.000
Venezia- Accademia	4.000
Vicenza	4.000

COSTS

Map without overprinting	5€
Map overprinted with permanent controls	8€
Map file in JPEG format	100€
Training with SPORTident time keeping	120€ + 8€ pro map

LOCATION OF TRAINING CAMPS

Link to Google Maps: <http://goo.gl/maps/mvx19>

EMBARGOED AREAS

Visit website: www.woc2014.info <http://www.woc2014.info/Embargoed.html>

ACCOMMODATION WOC

HOTELS

Hotel Category	Half board B level	B&B
A level (indicatively *****)	€ 73.00	€ 62.00
B level (indicatively ***S)	€ 62.00	€ 53.00
C level (indicatively ***)	€ 54.00	€ 46.00
D level (indicatively **)	€ 46.00	€ 39.00

RESIDENCE

Kind of accommodation	Price Minimum stay 7 days	Price Maximum stay 7 days	Additional day Average price
Two-room apartment / 4 beds	€ 380.00	€ 600.00	€ 60.00
Two-room apartment / 5 beds	€ 410.00	€ 650.00	€ 75.00

PRIVATE APARTMENTS

Category	Price 7 days for 4/5 beds apartments Expenses Included	Price 9 days for 4/5 beds apartments Expenses Included
4 star gentians	€ 500.00	€ 600.00
3 star gentians	€ 400.00	€ 500.00
2 star gentians	€ 350.00	€ 450.00
1 star gentians	€ 300.00	€ 400.00

Please return form to: info@wtoc2014.info - Fax +39 0461 727799

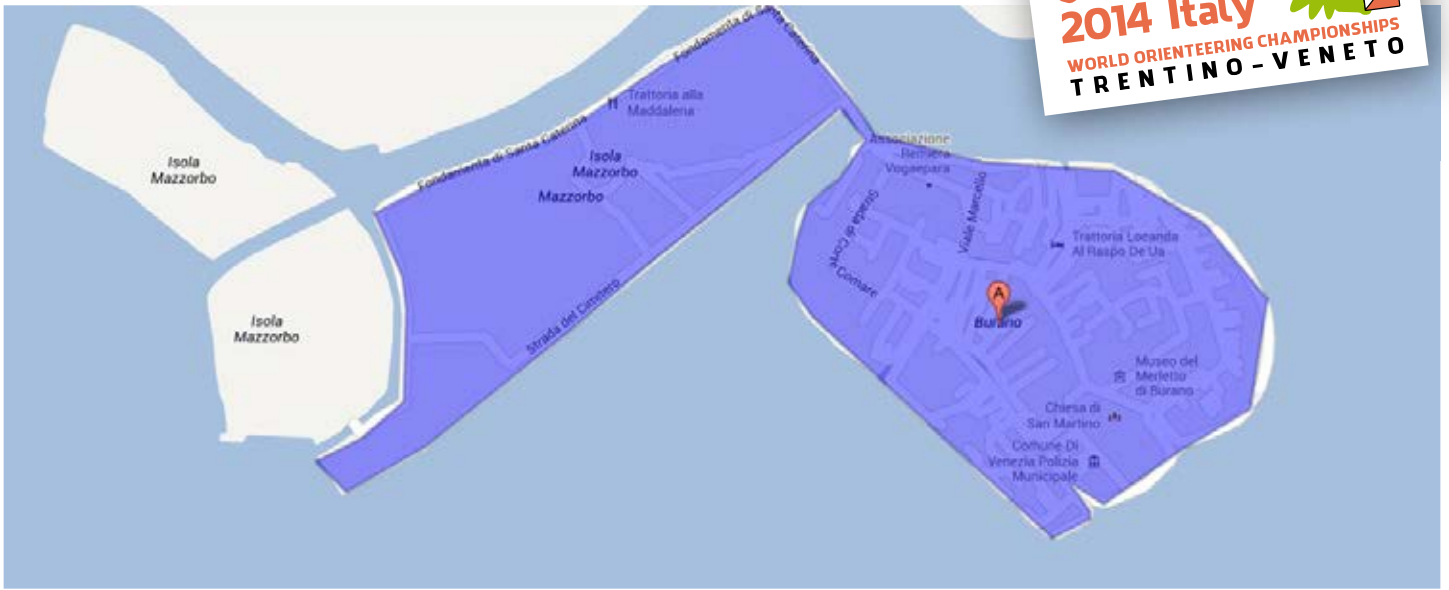
Address: WOC WTOC ITALY 2014 - c/o APT Valsugana - Villa Sissi , Loc. Parco,3 - I 38056 Levico Terme (TN)

All details about useful local travel links can be found on the website: www.woc2014.info.

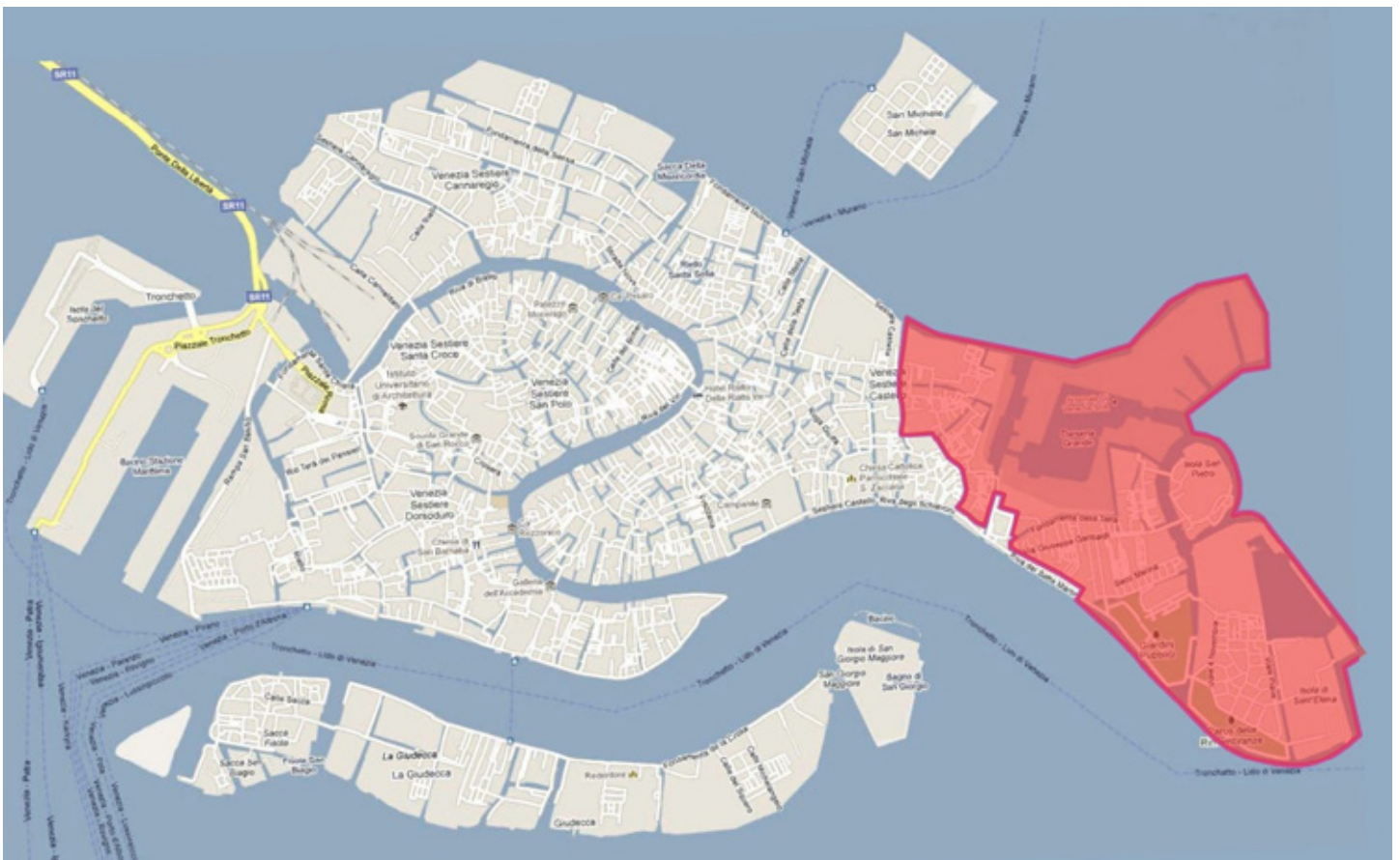
EMBARGOED AREAS FOR WOC



BURANO



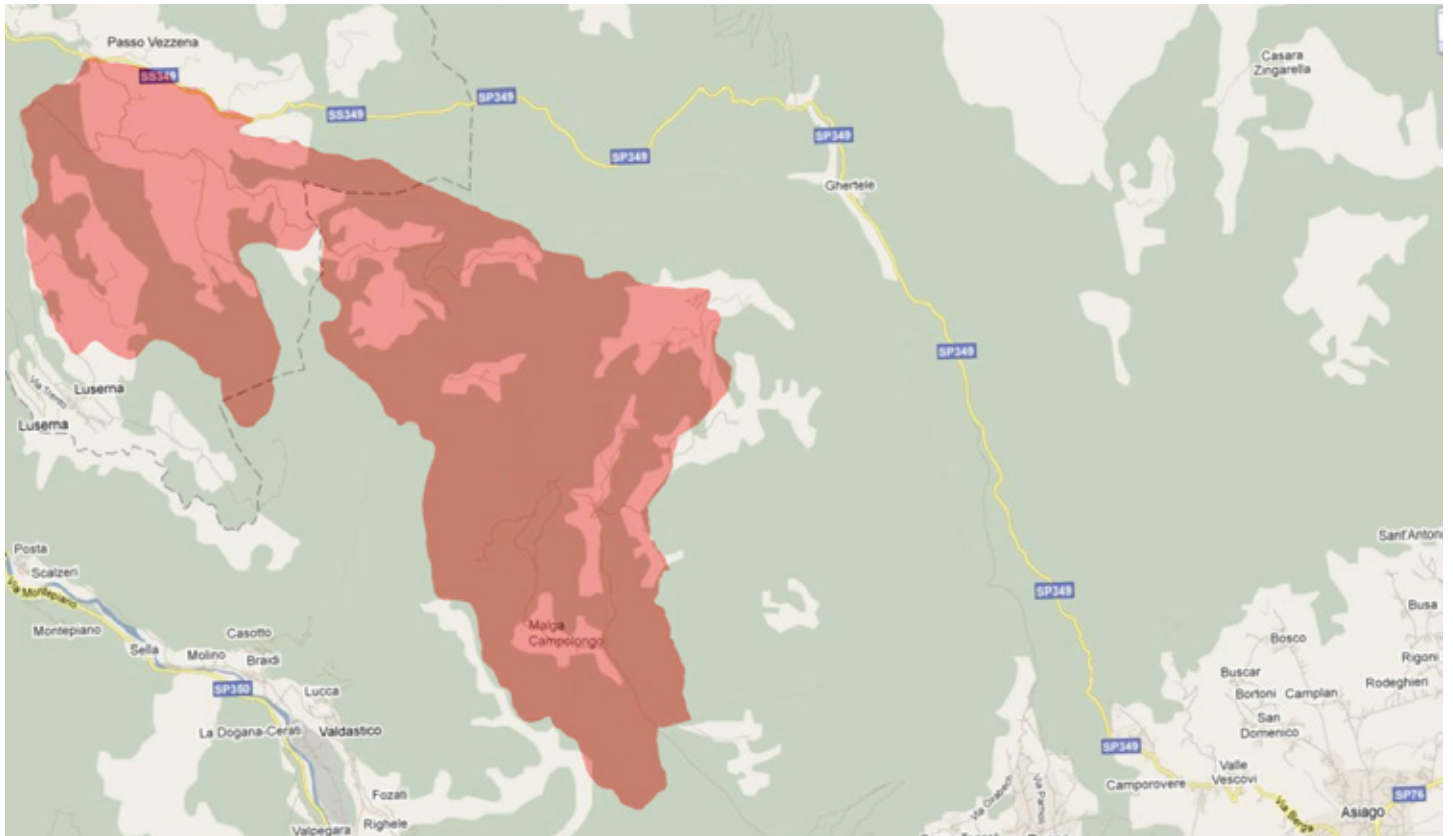
VENEZIA



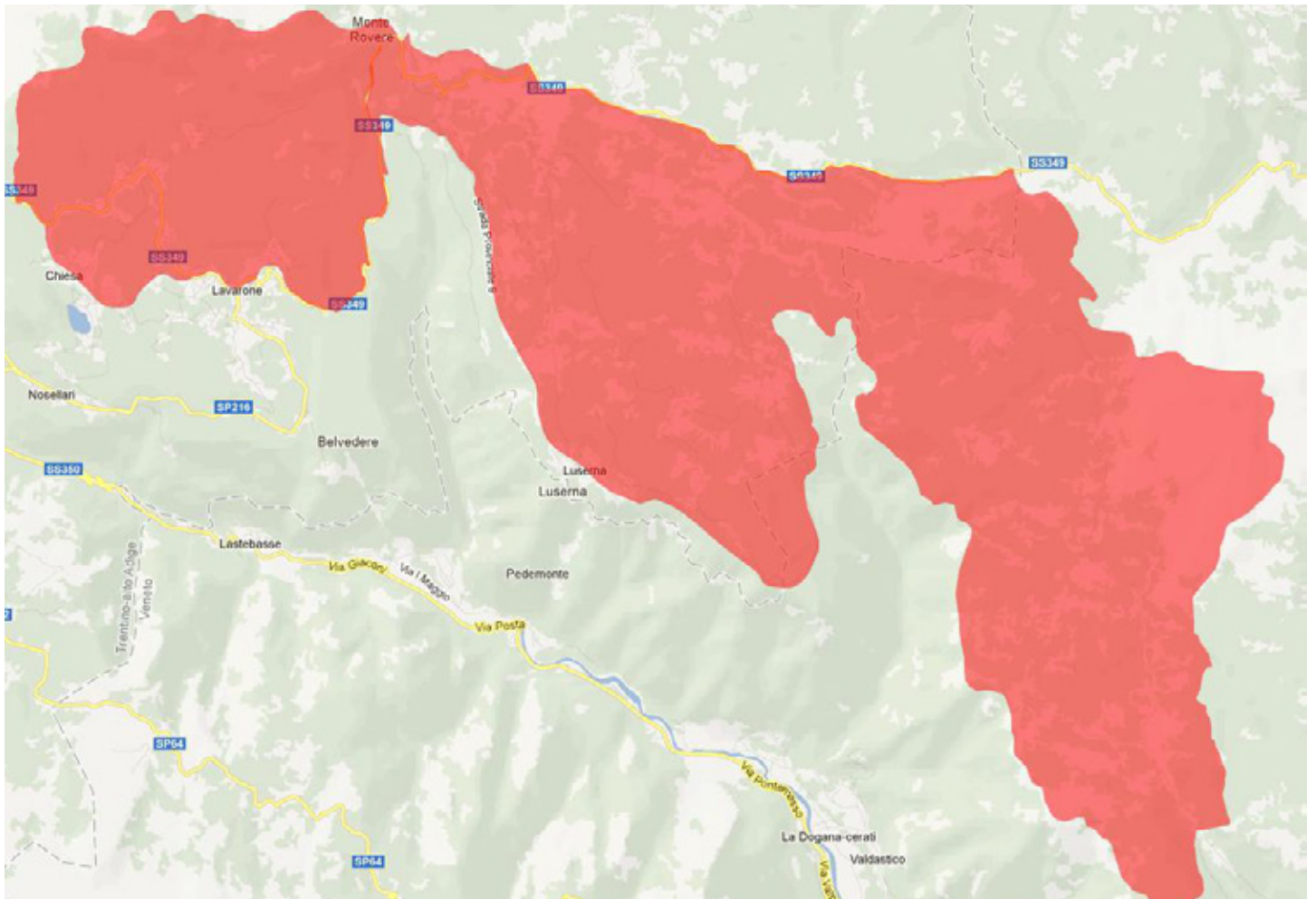
TRENTO



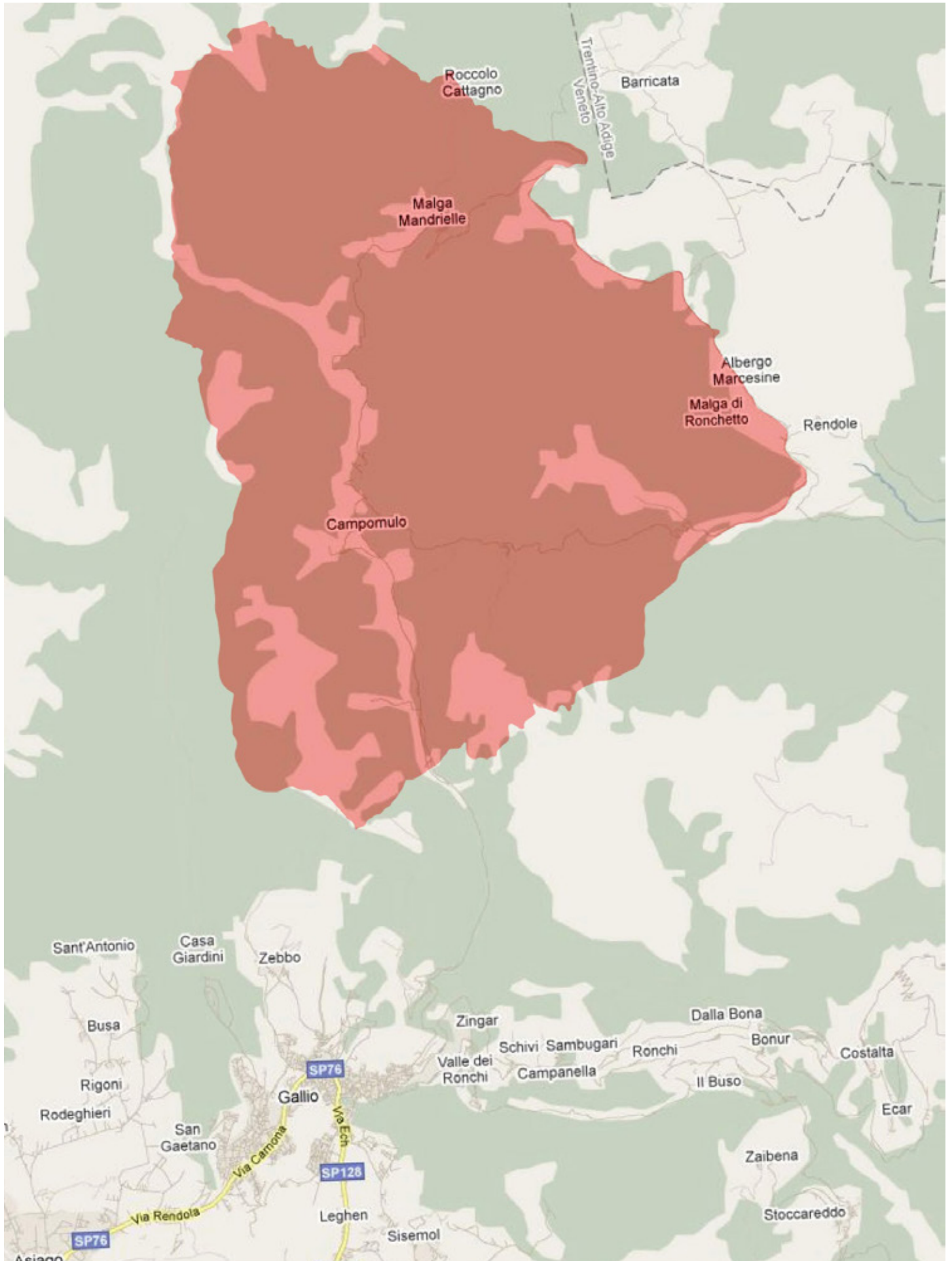
CAMPOLONGO VEZZENA



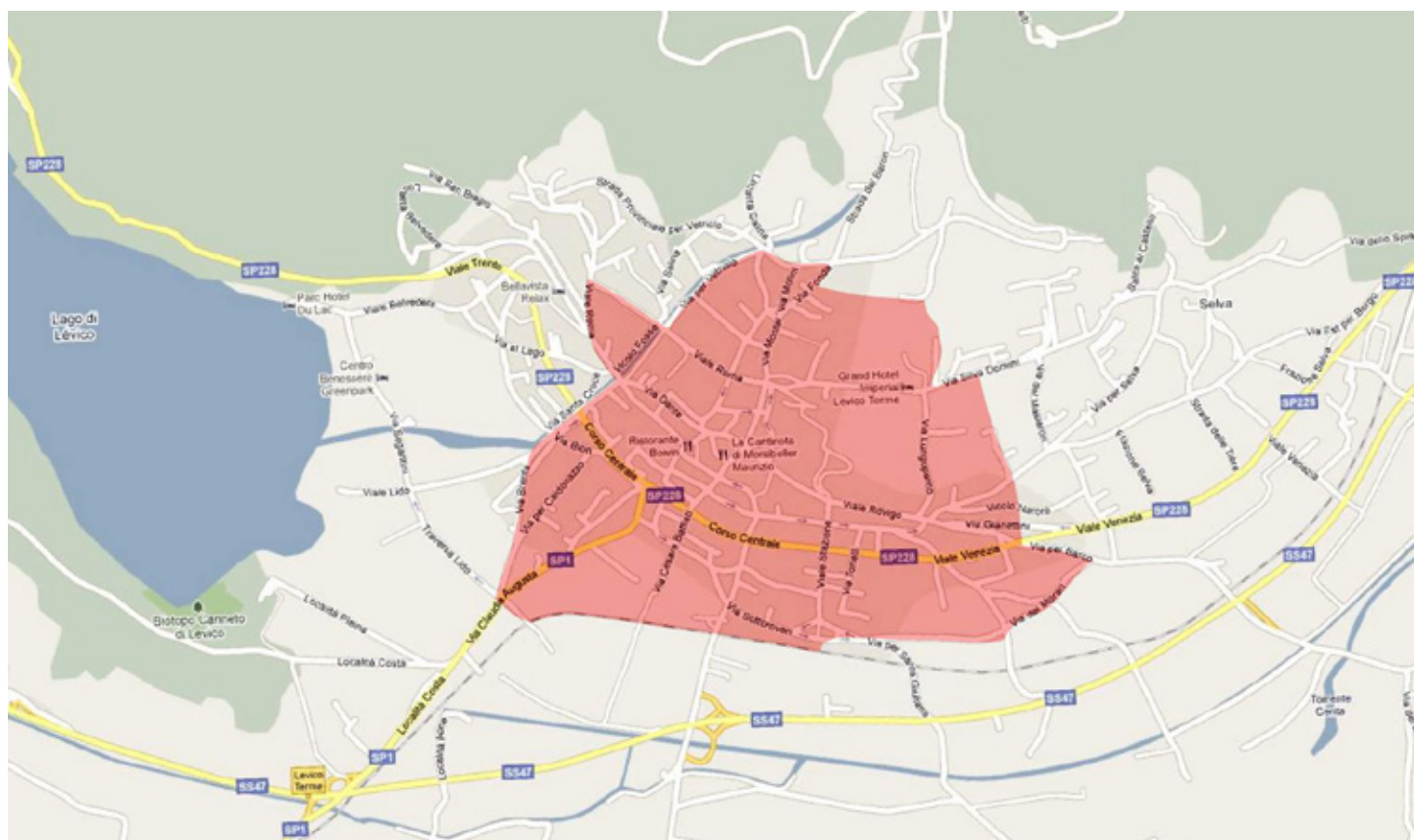
LAVARONE



CAMPOMULO MARCESINA



LEVICO



LAVARONE

The long distance final will be held in the hills and valleys of Lavarone with stretches of alpine, pine, spruce and beech forest. The terrain is a mix of areas with good visibility, forest with good runnability, and areas where vegetation is more dense and running speed is reduced.

CAMPOMULO

The middle distance final is organized in Campomulo, which is part of Asiago karstic highland, in the altitude of 1500-1700 meters above sea level. The landscape is characterized by many terraces divided by steeper areas. Vegetation varies from alpine pastures to open forest, mainly coniferous, and the ground surface is very rocky throughout reducing the runnability in the forest. Trenches from World War are very common in this area. The network of paths, tracks and roads is not very dense. Cross country ski tracks exist in parts of the area.

TRENTO

The sprint relay will take place in the historical center of Trento. Most of the competition terrain (70-80%) is paved urban area and the rest is park area. The area is flat and characterized by perpendicular Roman streets with medieval influence.

BURANO

The sprint qualification will be held in the Burano and Mazzorbo islands. This area is partly urban with very narrow streets and a canal with bridges. The rest of the area is less built and more green with some farmland. The area will be closed for traffic.

VENEZIA

The sprint final will be held in the center of Venice known for its old urban centre with narrow streets and small canals. All races will take place in the historical center. The area will be closed for traffic.

COMPETITION	CLASS	APPROXIMATE WINNING TIME (min)	APPROXIMATE LENGTH (km)
SPRINT COMPETITION BURANO	M	13'	3,5-3,7
SPRINT QUALIFICATION BURANO	W	13'	3,2-3,3
SPRINT FINAL VENEZIA	M	15'	4,5
SPRINT FINAL VENEZIA	W	15'	4,0
SPRINT RELAY TRENTO	W-M-M-W	13'-15' PER LEGS (56'60'TEAM)	3,2 -4,1
LONG DISTANCE FINAL LAVARONE	M	95'	17
LONG DISTANCE FINAL LAVARONE	W	75'	10
MIDDLE DISTANCE FINAL CAMPOMULO	M	35'	5,6
MIDDLE DISTANCE FINAL CAMPOMULO	W	35'	4,4
RELAY FINAL CAMPOMULO	M	35' PER LEGS (98'-100' TEAM)	3,9- 4,6
RELAY FINAL CAMPOMULO	W	30-32 PER LEGS (90'-96' TEAM)	4,7-5,4

FEES

WOC

ACCREDITATION FOR ATHLETES	90€
TRANSPORTATION SERVICES	120€
BANQUET	40€
ENTRY FOR SPRINT	90€
ENTRY FOR MIDDLE DISTANCE	60€
ENTRY FOR LONG DISTANCE	60€
ENTRY FOR RELAY	160€
ENTRY FOR SPRINT RELAY	160€
ACCREDITATION FOR TEAM OFFICIALS	200€

Preliminary entries must be made by 31st January 2014 and final entries by 15th June 2014. Please send your entries to info@woc2014.info using the official entry forms. Entries will not be considered valid until payment of all fees has been received. Full payment is due by 1st June 2014.

VISAS

According to the current regulations, citizens of some countries must obtain a Visa in order to enter Italy. Visas should be applied at your nearest Italian Embassy. Please note that conditions of entry to Italy can change and all Woc - Wtoc participants are advised to keep up to date with the current situation by consulting their local Italian Embassy. Please check the following website for more information: http://www.esteri.it/visti/index_eng.asp.



ACCREDITATION FOR IOF OFFICIALS AND GUESTS

Accreditation, requests for transportation and hotel reservations are performed through the event website.

Payments must be made to:

WOC.WTOC ITALY 2014

IT48B0809134820000000024552

BIC: CCRTIT2T23A

CASSA RURALE DI FOLGARIA BBC

The deadline for accreditation is 30 April 2014.

The registration and accreditation fee is **100 €** (does not include entry to the 5 Days of Italy).

The accreditation includes:

- entry to VIP tent in the race arena
- competition maps
- start and result lists
- entry to VIP and Media race
- promotional material



IMPORTANT DEADLINES

31 JANUARY 2014

- Preliminary entries for teams
- Accreditation for media

30 APRIL 2014

- Accreditation for IOF officials and WOC2014 guests
- Deadline for confirming reservation for accommodation

31 MAY 2014

- Deadline for Italy 5 days registration
- Deadline for confirming the accommodation reservation for IOF officials and guests

1 JUNE 2014

- Full payment of entry fees and services ordered

15 JUNE 2014

- Final entry for teams

CLOTHING

According to national rules, competitors must wear clothing covering the whole body. Short sleeves covering shoulders and upper part of the upper arms are allowed in the shirts. There is no such regulation in sprint competitions.

There are no regulations concerning the type of footwear in long distance and in sprint competitions. In middle distance and relay spike shoes are forbidden.

QUARANTINE AREAS

Quarantine will be used for all WOC competitions and quarantine areas will be located close to the event arenas. In the quarantine area it is possible to stay inside or outside. From the quarantine area athletes will be transported by the organizers to the pre-start area.

START INTERVALS

The starting interval of the middle distance final will be 2 minutes. The starting interval of the long distance final will be 3 minutes.

TRANSPORT

Distances between the Event Centre, arenas and other places during the WOC 2014 are as follows:

	LAVARONE EVENT CENTER
VENICE	139Km
CAMPOMULO	42 Km
ASIAGO	31 Km
JESOLO	173 Km
TURCIO	35 Km

Teams, IOF officials, guests and media representatives can order a transportation package:

- to and from the model events
- to and from the competition arenas

The transport package must be reserved via the entry form.

On request, the organizers will arrange transport from and to Verona and Venice Airports.

There will be a dedicated area for parking for those travelling by private car.

More detailed information will be presented in bulletin 3.

FIVE DAYS OF ITALY 2014

WORLD ORIENTEERING CHAMPIONSHIPS TOUR
TRENTINO - VENETO

5 DAYS OF ITALY 2014 PROGRAM

DAY	5 DAYS	PLACE	WOC	WTOC
SATURDAY, JULY 5 TH 2014	PROLOGUE	VENICE	SPRINT (QUAL. AND FINAL) BURANO AND VENICE (VI)	
SUNDAY, JULY 6 TH 2014	DAY 1	TURCIO, ASIAGO (VI)	OPENING CEREMONY - ASIAGO (VI)	
MONDAY, JULY 7 TH 2014	DAY 2	LEVICO TERME (TN)	SPRINT (RELAY) - TRENTO (TN)	TEMP-O - TENNA AND LEVICO (TN)
TUESDAY, JULY 8 TH 2014	SPECIAL RACE	FOLGARIA (TN)		
WEDNESDAY, JULY 9 TH 2014	DAY 3	LAVARONE (TN) - SOUTH	LONG - LAVARONE (TN)	DAY 1 - LUSERNA (TN)
THURSDAY, JULY 10 TH 2014	DAY 4	LAVARONE (TN) - NORTH		
FRIDAY, JULY 11 TH 2014	SPECIAL RACE	ASIAGO (VI)	MIDDLE - CAMPOMULO (VI)	DAY 2 - CAMPOMULO (VI)
SATURDAY, JULY 12 TH 2014	DAY 5	CAMPOMULO	RELAY - CAMPOMULO (VI)	
			CLOSING CEREMONY - LAVARONE (TN)	

5 DAYS OF ITALY 2014 ENTRY FEES

- € 5,00 additional map
- € 2,00 rent SI-unit
- € 80,00 transport between arenas (except for Venice)

Entry before 31/01/2014:

- € 80,00 (15 years and younger)
- € 110,00 (16-20 years)
- € 130,00 (21 years and older)

Entry before 31/05/2014:

- € 100,00 (15 years and younger)
- € 130,00 (16-20 years)
- € 150,00 (21 years and older)

For a single day:

- € 20,00 (15 years and younger)
- € 25,00 (16-20 years)
- € 30,00 (21 years and older)

PROLOGUE (VENICE SUMMER RACE) ENTRY FEES

For the Venice Summer Race the classes are the same as per the 5 Days of Italy 2014. There is only one deadline: 31/05/2014. The entry charges are as follows:

- € 15,00 Beginners - (15 years and younger)
- € 20,00 (16-20 years)
- € 25,00 (21 years and older)
- € 5,00 additional map
- € 2,00 rent SI-unit
- € 35,00 transport (from event center - by bus and waterbus)

CLASSES

The classes for the 5 Days of Italy 2014 and for the Venice Prologue race are the following:

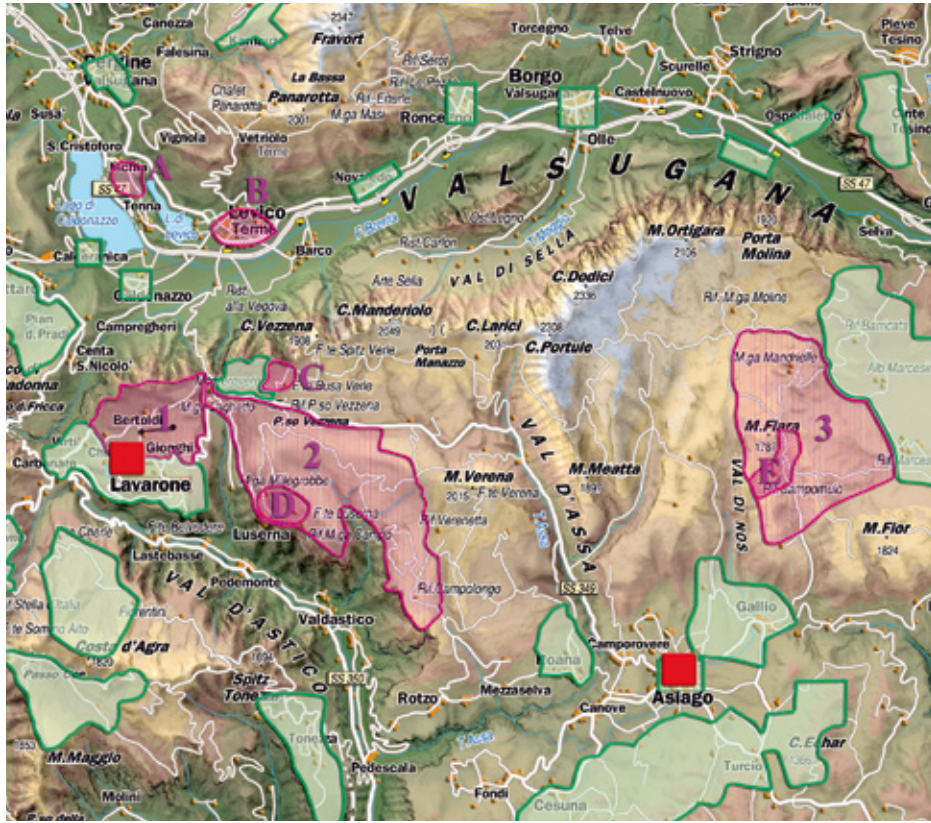
M10, W10, M12, W12, M14, W14, M16, W16, M18, W18, M20, W20, M Elite, W Elite, MA Long, WA Long, MA Short, WA Short, MB, WB, MC, WC, M35, W35, M40, W40, M45, W45, M50, W50, M55, W55, M60, W60, M65, W65, M70, W70, M75, W75, M80, Open Short, Open Medium, Open Long, Beginners.

You can not enter the competition area without being registered. On the same day you can register only in the Open or Beginners classes.

The entries will be done through the OrienteeringOnline.net system (prologue race and 5 days) Timing and validation at each control flag is done with the Sport-Ident system (SI-unit).



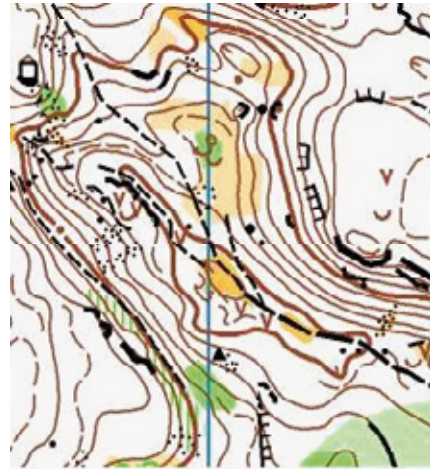
TRAINING AREAS



EXAMPLES OF PREVIOUS MAPS



ASIAGO 1:5.000 – 2,5m



CAMPOMULO 1:15.000 – 5m



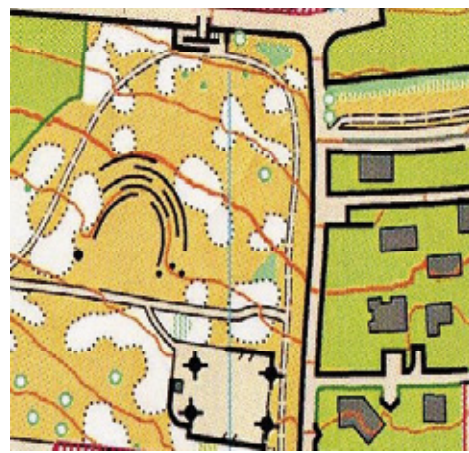
CAMPOMULO 1:15.000 – 5m



LAVARONE 1:15.000 – 5m



LAVARONE 1:15.000 – 5m



LEVICO 1:5.000 – 2,5m



FEASR



REGIONE DEL VENETO



PROGRAMMA
2007
OPSR
1 VEN
3 ETO



Fondo europeo agricolo per lo sviluppo rurale: l'Europa investe nelle zone rurali



ASIAGO

*sole, verde, aria,
gioia di vivere la montagna*

sun, green, air, joy of living the mountain

CONSORZIO TURISTICO

ASIAGO 7 COMUNI

www.asiago.to

Folgaria Lavarone Luserna



Folgaria, Lavarone e Luserna, un grande altopiano di vacanza in Trentino, 105 kmq di territorio tra i 1000 e i 2000 m. di quota.

Ampie foreste di abeti, vasti terrazzi alpestri, estesi panorami, pascoli rigogliosi e torrenti dalle fresche acque. Qui la natura è dolce, riposante. Proprio come... un amore di montagna!



Folgaria, Lavarone and Luserna, a great plateau of Holiday in Trentino, a vast territory between 1000 and 2000 m. of quota.

Wide forests of firs, go alpine terraces to you, extended i panoramas, pastures and torrents from fresh waters. Here the nature is sweet, resting. Just like... a mountain with love!



Azienda per il Turismo
Folgaria Lavarone Luserna
I-38064 Folgaria tel. + 39 0 464 724100
info@folgariavaroneluserna.it

*la montagna così vicina a casa da non poter resistere all'invito di scoprirla, viverla ed amarla
the near mountain therefore you will not resist the temptation of discovering, living and loving it*



VALSUGANA
LAGORAI • TERME • LAGHI
AZIENDA PER IL TURISMO

TRENTINO

www.visitvalsugana.it

MINT

Valsugana & Lagorai

WHAT TYPE
OF HOLIDAY
SUITS
YOU BEST?



CHOOSE THE HOLIDAY THAT SUITS YOU BEST!

You will have the chance to spend your leisure time around Caldonazzo and Levico lakes, where it is possible to bath from May till September, at the town and mountain Spas, on the 80 km cycling path that lead to Bassano or practicing MTB along the many routes at altitude, in the forest or in the high alpine pastures of Lagorai mountain chain, in the cheese farms and plateaus, on history footsteps along the trekking routes of the Austro-Hungarian forts, or in the alpine huts in the mountains.

Bike



Winter



Open Air



Apartments



Thermal
Spa & Wellness



Rural
Tourism



Accessible
Tourism



**Azienda per il Turismo
Tourist board
Valsugana Lagorai**

Viale V. Emanuele, 3 - 38056 Levico Terme (TN)
Tel. +39 0461 727700 - Fax +39 0461 727799
info@valsugana.info

ITALIA

The background of the entire page is a light gray topographic map with contour lines of varying thickness and spacing, creating a sense of depth and terrain. The lines are more densely packed in some areas, indicating steeper slopes, and more widely spaced in others, indicating flatter ground. The overall style is clean and technical, typical of a map used in orienteering.

**WORLD
ORIENTEERING
CHAMPIONSHIPS**
TRENTINO_VENETO
5th - 12th JULY 2014
ITALY